



How to Create an Interplay Work Group

- Connect your analyzer computer on the stand to the computer in the locker room
- Create a work group with several computers connected to the main computer for viewing, exporting, discussing situations, players, strategy, skills and development.



Connect 2 Interplay
computers wireless or by net
cable for halftime review



Step 1

Add your computers to a workgroup

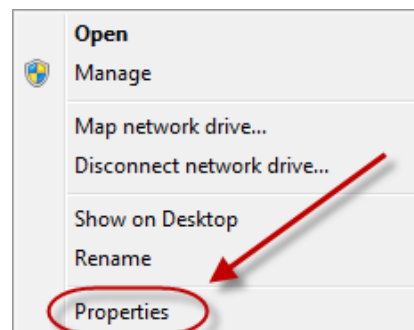
- Click your Start button.



- Right click at the Computer



- Click at properties



- This will open the information about the computer. All computers in the workgroup need to have same name for the Workgroup.

- In this group the name of the workgroup is INTERPLAY.

View basic information about your computer

Windows edition

Windows 7 Professional

Copyright © 2009 Microsoft Corporation. All rights reserved.

Service Pack 1

[Get more features with a new edition of Windows 7](#)



System

Rating:



[Windows Experience Index](#)

Processor:

Intel(R) Core(TM)2 Extreme CPU Q9300 @ 2.53GHz 2.53 GHz

Installed memory (RAM):

4,00 GB

System type:

64-bit Operating System

Pen and Touch:

No Pen or Touch Input is available for this Display

Computer name, domain, and workgroup settings

Computer name:

Interplay-PC

Full computer name:

Interplay-PC

Computer description:

INTERPLAY

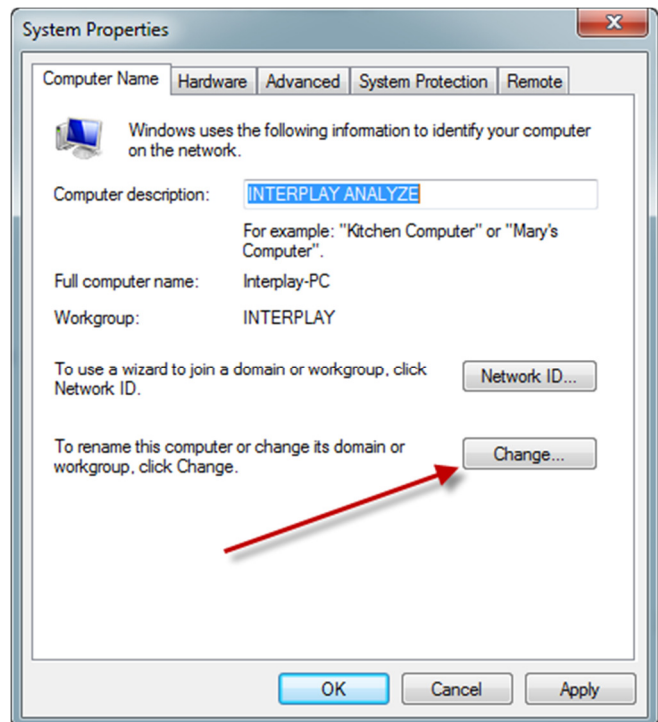
Workgroup:

INTERPLAY

[Change settings](#)

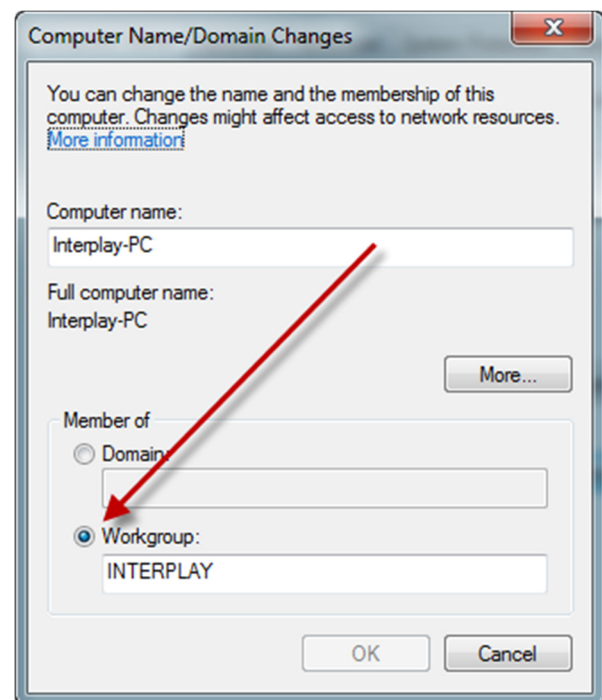
- Click at Change settings for change the name of the work group

- This open the box for System Properties



- The box for changing the computer name will be opened. Mark the computer as a member of a Workgroup and write the name for the workgroup. Remember all computers in the same workgroup have to have the same name for the workgroup.

- The computer is now a member of the workgroup "INTERPLAY".



- All Computer names in the group need to be different.
- The group name needs to be the same in all computers you want to connect.
- Restart the computer.

Step 2

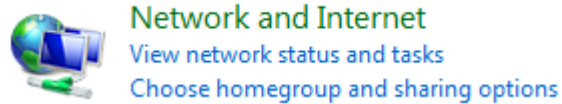
Make the Analyze computer ready as server

Open your control panel from the Start button

Click



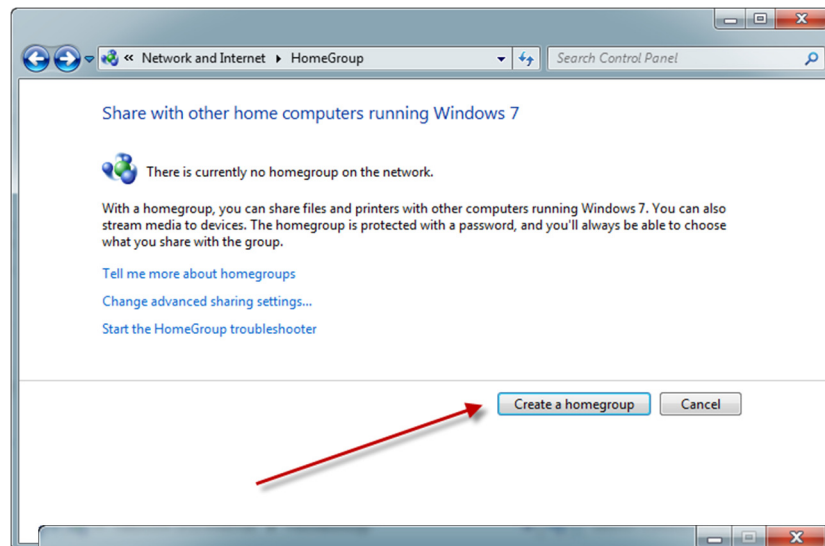
Click



Click

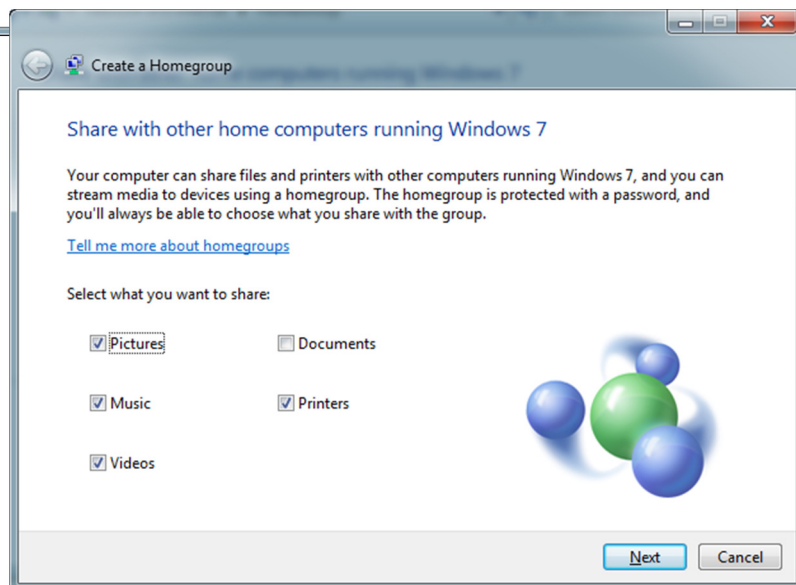


Create a new group



Select what you want share

The Interplay video and system folder will be shared with another method. See later.

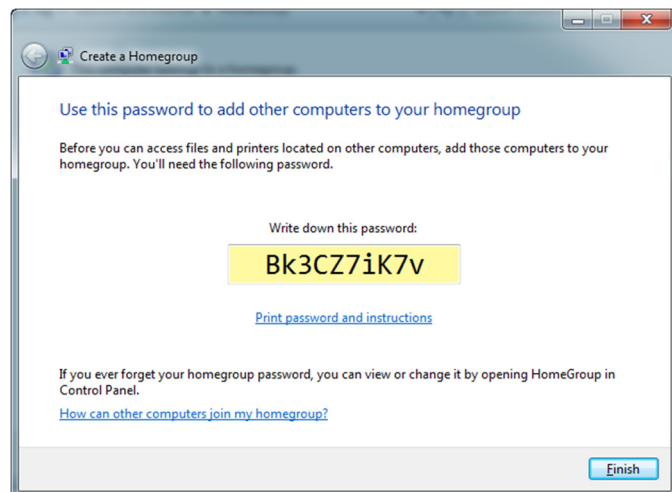


to

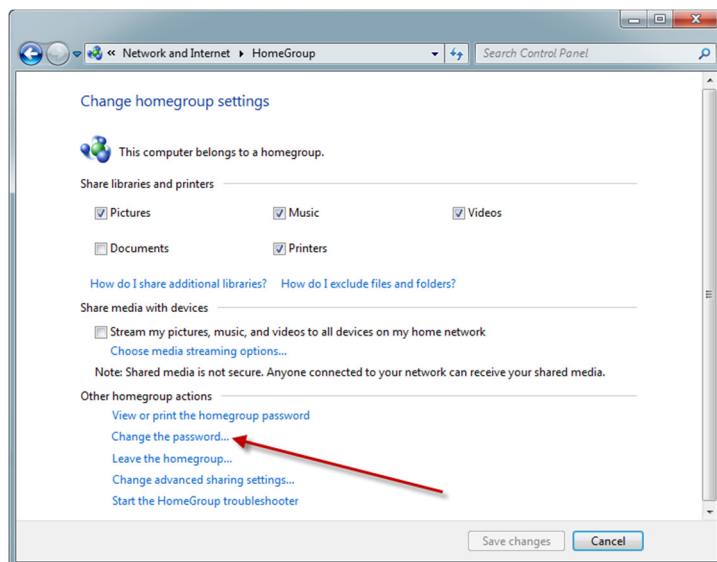
Create a group password

The process will create a password for the group.

You can change the password by opening Home group in Control Panel as explained in the first 3 steps in this user guide.



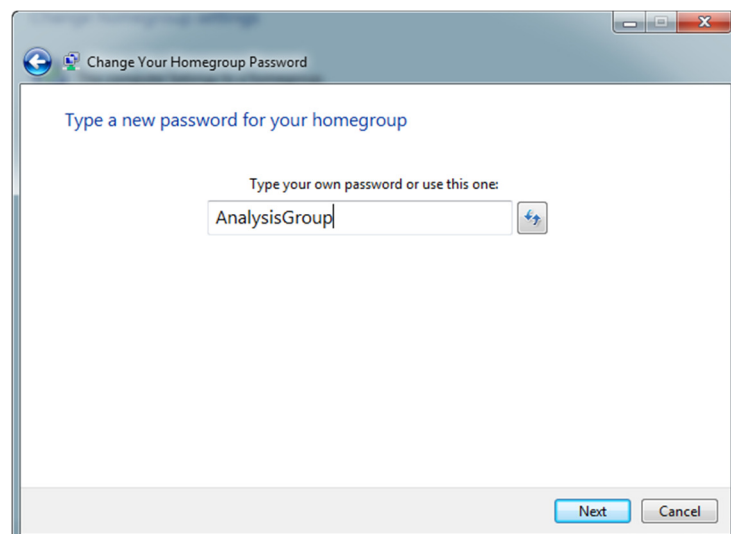
Change to another password



Change a group password

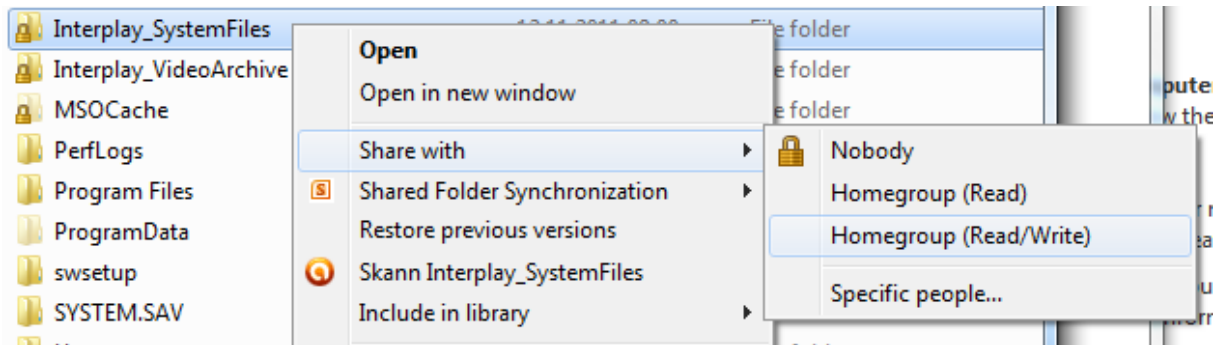
This computer has control with the password for login into the group.

Other computer that know this password and belongs to the same workgroup can get information from this computer to other Interplay computers



Step 3

Share your Interplay folders



This folders need to be shared:

C:\Interplay_SystemFiles

This folder contains all databases with your analysis and taggings.

C:\Interplay_VideoArchive

You will find all video clips from the analyzed games into this folder

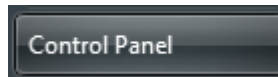
- Right click at the folder name
- Click: Share
- Click Home group (Read/Write)

Step 4

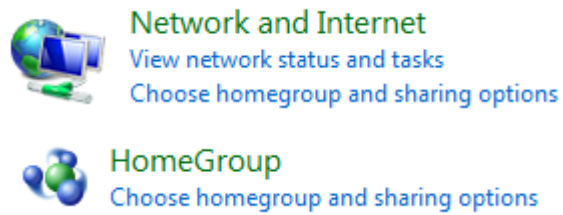
Add other computers to the workgroup as Clients

Open your control panel from the Start button

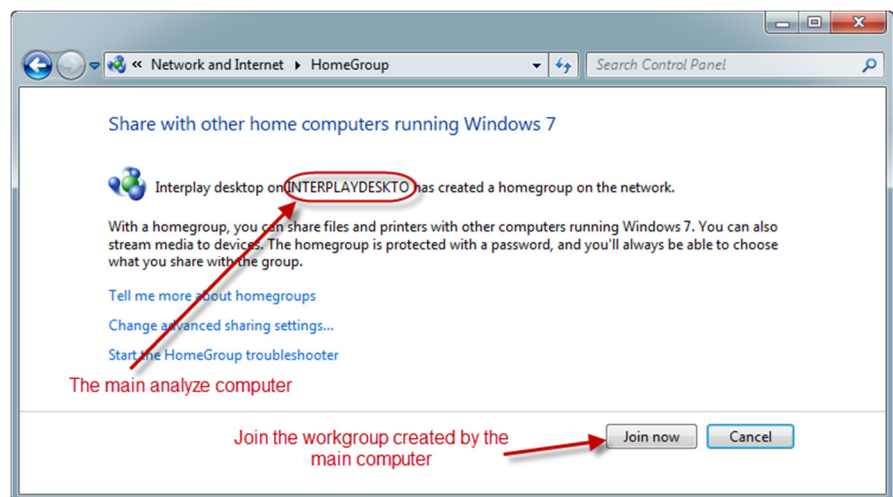
Click



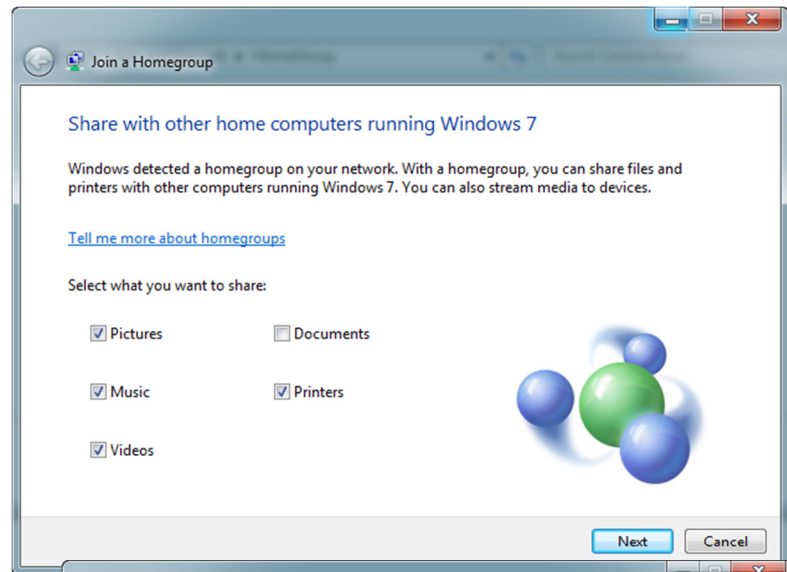
Click



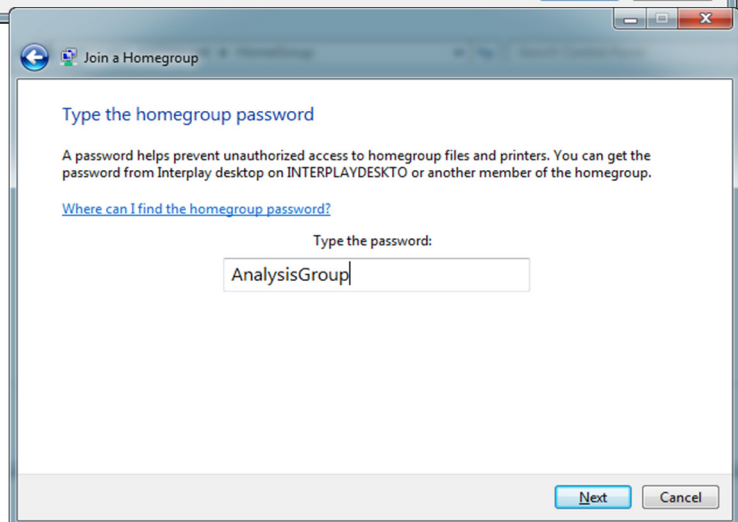
Join an existing work group



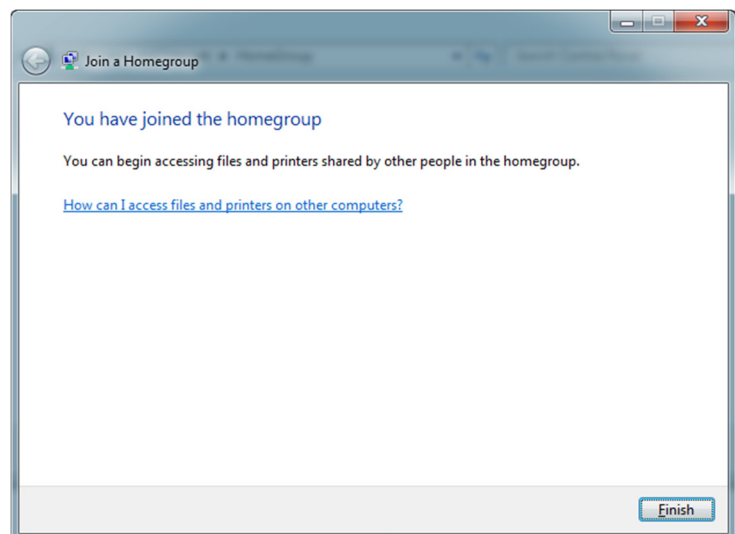
Follow the instructions:



**Write the password you have got
from the main analyze computer**



**You are now connected to the Work
group**



You can now move files and information between the computers in the workgroup, but Interplay needs to have a specific address in the local network before other computers can find the tagged information and video files from the main computer.

You are almost finished....

Step 5

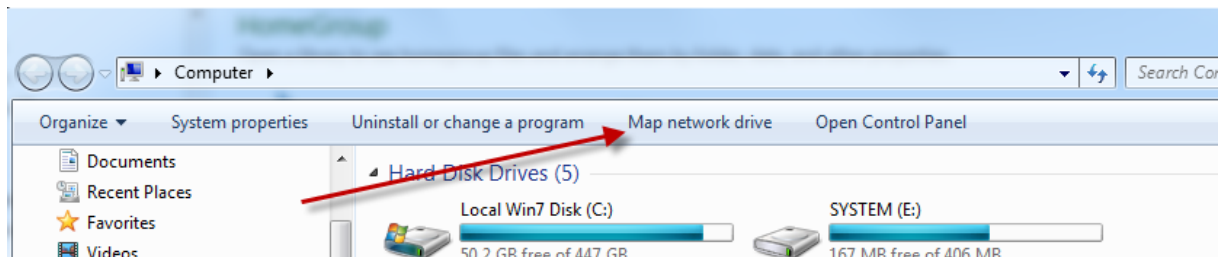
Map the Interplay folders so they got a specific address

Click the Start Button and

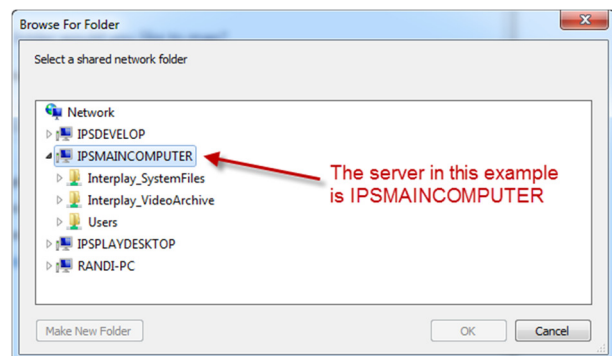
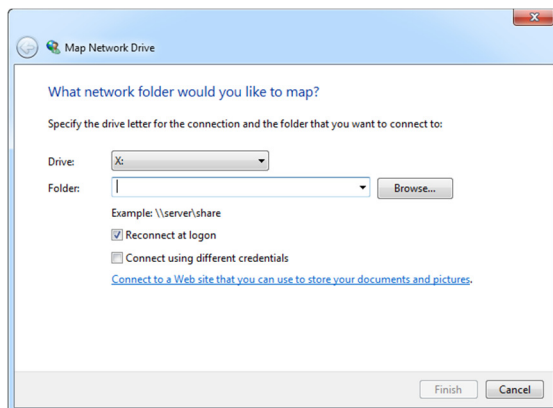


Method 1

Click at "Map network drive:



Click at Browse and go to the shared folders from the server.

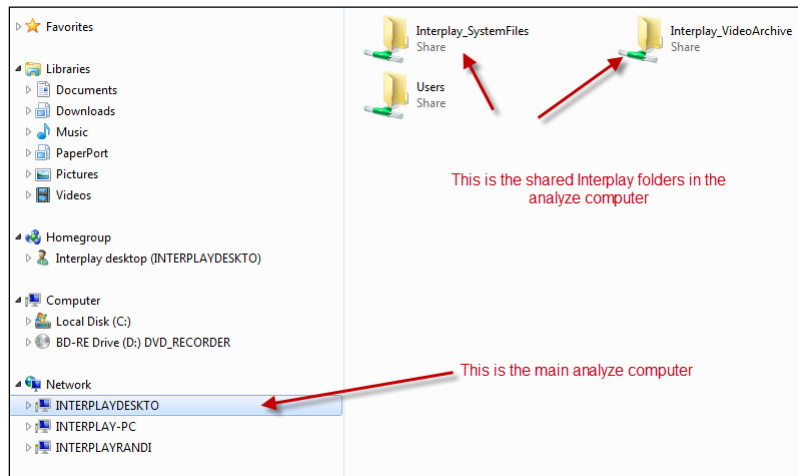


The first folder you should map is
Interplay_Systemfiles

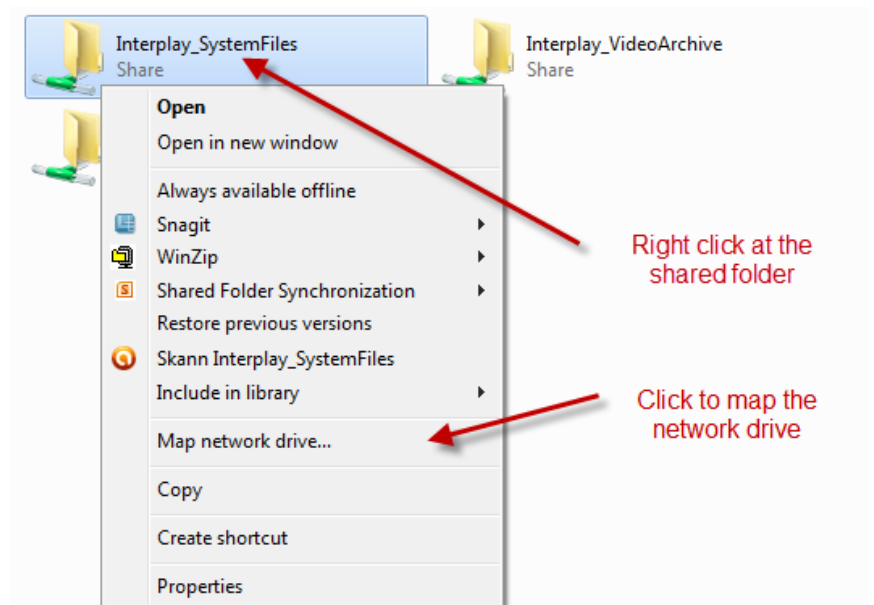
Then you repeat the map function and map Interplay_VideoArchive

Method 2

You can also use this method for mapping the work group and the shared folders



Right click at the Interplay-system folder

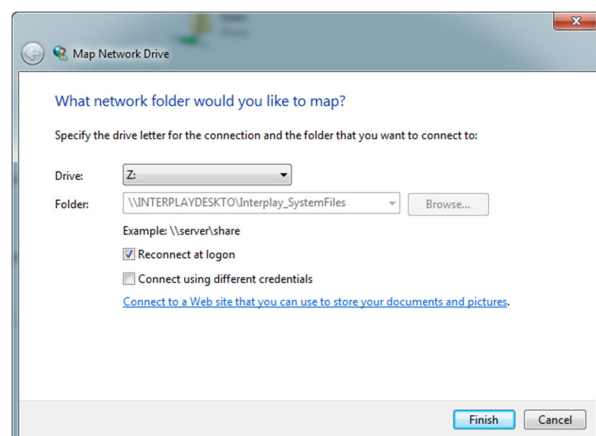


Then “Browse” as in method 1:

This process gives a specific drive letter and address for the folder.

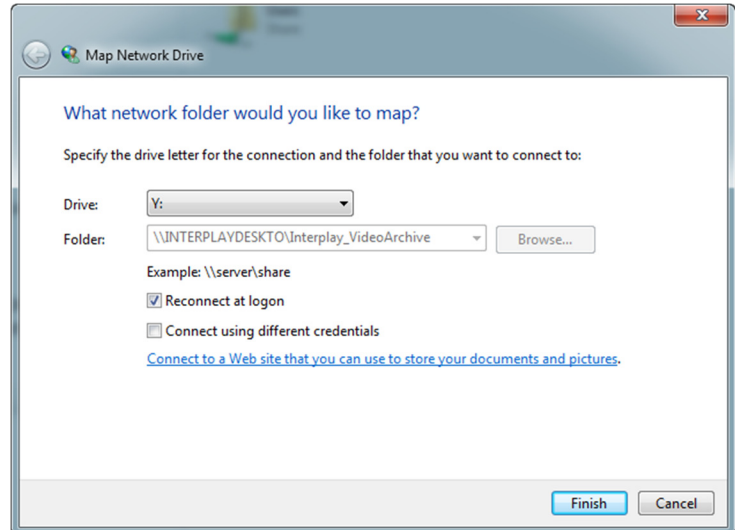
When you click “Finish”, you open up the folder in the Analyze computer.

Close the window.



**You need also to map the folder
C:\Interplay_VideoArchive.**

**Both Interplay folders need to be
mapped before you can access
information from the main
computer.**



You are now finished with your network

Startup your Interplay

When you now startup
Interplay, you will see 2
new buttons.

You can open your local
Interplay system or you
can log on the database
shared in the group and
see all information from
the main computer.

Now you can share all
your analysis easy and fast.



Connect to your local database

Connect to the main analyzer
computer